

Gauge	1/8
Typ	Cut Pile
Skład	Saphira
Pierwszy podkład	Woven
Waga runa	2050 gr/m ²
Gęstość tkania	176.377 /m ²
Podkład właściwy	Cosyback
Szerokość	400 cm
Waga całkowita	2550 gr/m ²
Wysokość całkowita	12,5 mm
Runo wew/na zew	Wew
Długość rolki	20 m
DOP	1087#01035/15262/XI
Atest trudnopalności	Cfl-s1
Klasa użytkowa	23/31
TOG rating	1,15



Dostępne kolory	Cosyback 400 cm	109 116 140 154 157 230 304 305 317 405 406 408 474 760 853 880 895 964
-----------------	-------------------	---

Oznaczenia kolorów	109 Steel	116 Stone	140 Ash
	154 Light Grey	157 Pebble	230 Mint
	304 White Swan	305 Pearl	317 Natural
	405 Ashes of Roses	406 Rose Taupe	408 Hazy Earth
	474 Peach	760 Cognac	853 Purple Haze
	880 Atlantic	895 Blue Bell	964 Walnut



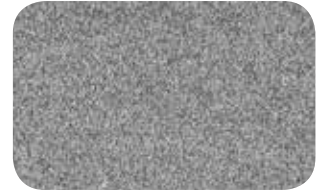
These details are approximate. Complete specification details and associated certificates together with tolerances applying to the above can be provided upon request. We reserve the right to modify technical specifications without prior notice. Due to method of manufacture perfect pattern and/or colour matching can not be guaranteed. In cut-pile carpeting, in rare cases, shading/pile reversal may occur without affecting its fitness for use. Shading/pile reversal can not be considered as a manufacturing or a material defect and will not affect the durability of the carpet.

BIG Floorcoverings nv Rijksweg 442 | 8710 Wielsbeke - Belgium | T +32 (0)56 67 42 11 | F +32 (0)56 67 48 40 | www.ideal-bintg.com

24.08.2018 | ISO N090N02/2/01-01-10



Beaulieu
International
Group



109 - 400 cm



116 - 400 cm



140 - 400 cm



154 - 400 cm



157 - 400 cm



230 - 400 cm



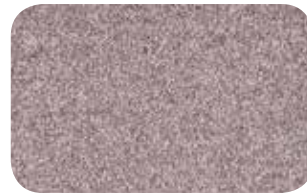
304 - 400 cm



305 - 400 cm



317 - 400 cm



405 - 400 cm



406 - 400 cm



408 - 400 cm



474 - 400 cm



760 - 400 cm



853 - 400 cm



880 - 400 cm



895 - 400 cm



964 - 400 cm